

PONTEM® FUND ACCOUNTING SUITE

A quick overview



WHO SHOULD USE IT?

- ◉ Counties, Cities, Villages, Townships
- ◉ Charter Schools
- ◉ Non Profit Organizations
- ◉ Large or Small Organizations
Scalable pricing provides *affordability* regardless of your size



888.742.2378

www.pontem.com

© Copyright 2010 Resource Information Associates, Inc., makers of Pontem Software.

SCALABLE MODULAR DESIGN

- ◉ General Ledger/Budgeting
- ◉ Accounts Payable
- ◉ Payroll
 - ◉ Imaging and Document Management Add-on
 - ◉ Integrated Time Management Add-on
- ◉ Cash Receipts / Management



888.742.2378

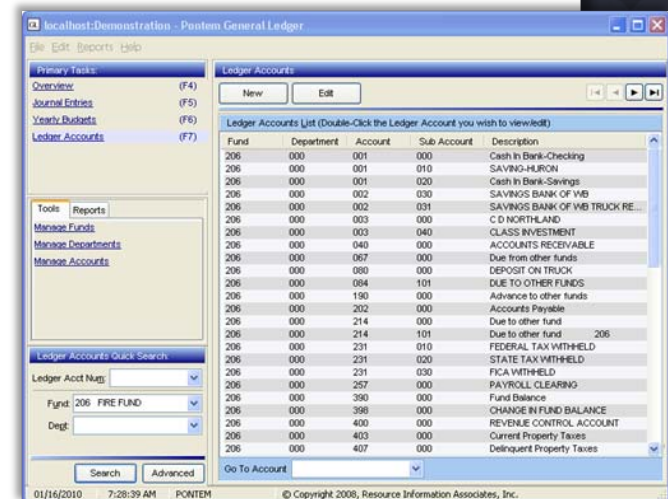
www.pontem.com

© Copyright 2010 Resource Information Associates, Inc., makers of Pontem Software.

UNPARALLELED FEATURES

○ General Ledger/Budgeting

- Real time posting providing up to date balances
- Easy to use budgeting
 - Unlimited budget amendments with comments
 - Convenient tools make budgeting a snap
- Unlimited transaction history
- Built in State Chart of Accounts
- Numerous flexible reports
 - Customize with built in report writer
 - State required reports (i.e. MI - F65)
- GASB compliant chart of accounts
- Automated transaction audit trail



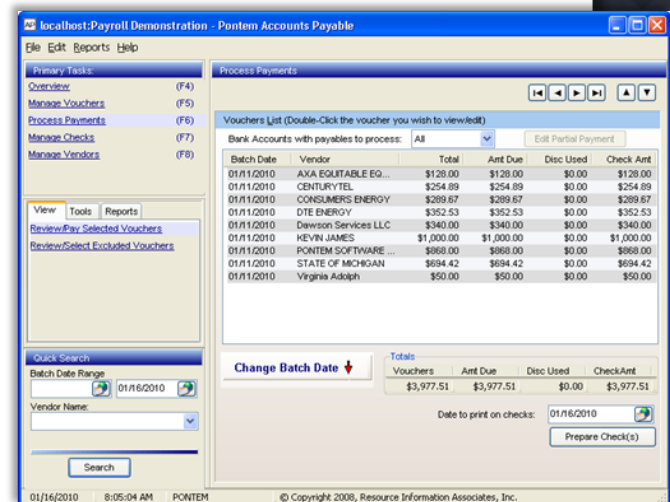
The screenshot displays the 'Ledger Accounts List' window in the Pontem General Ledger software. The window title is 'localhost: Demonstration - Pontem General Ledger'. The interface includes a menu bar (File, Edit, Reports, Help), a 'Primary Tasks' sidebar with options like 'Overview (F4)', 'Journal Entries (F5)', 'Yearly Budgets (F6)', and 'Ledger Accounts (F7)'. The main area shows a table of ledger accounts with columns for Fund, Department, Account, Sub Account, and Description. The table lists various accounts such as 'Cash in Bank-Checking', 'SAVINGS BANK OF VIB', 'CLASS INVESTMENT', 'ACCOUNTS RECEIVABLE', 'DEPOSIT ON TRUCK', 'DUE TO OTHER FUNDS', 'Advance to other funds', 'Accounts Payable', 'Due to other fund', 'DUE TO OTHER FUND', 'FEDERAL TAX WITHHELD', 'STATE TAX WITHHELD', 'FICA WITHHELD', 'PAYROLL CLEARING', 'Fund Balance', 'CHANGE IN FUND BALANCE', 'REVENUE CONTROL ACCOUNT', 'Current Property Taxes', and 'Delinquent Property Taxes'. The status bar at the bottom shows the date '01/16/2010', time '7:28:39 AM', and user 'PONTEM'. Copyright information for Resource Information Associates, Inc. is also visible.

Fund	Department	Account	Sub Account	Description
206	000	001	000	Cash in Bank-Checking
206	000	001	010	SAVING-HURON
206	000	001	020	Cash in Bank-Savings
206	000	002	030	SAVINGS BANK OF VIB
206	000	002	031	SAVINGS BANK OF VIB TRUCK RE...
206	000	003	000	C D NORTHLAND
206	000	003	040	CLASS INVESTMENT
206	000	040	000	ACCOUNTS RECEIVABLE
206	000	067	000	Due from other funds
206	000	080	000	DEPOSIT ON TRUCK
206	000	084	101	DUE TO OTHER FUNDS
206	000	190	000	Advance to other funds
206	000	202	000	Accounts Payable
206	000	214	000	Due to other fund
206	000	214	101	Due to other fund 206
206	000	231	010	FEDERAL TAX WITHHELD
206	000	231	020	STATE TAX WITHHELD
206	000	231	030	FICA WITHHELD
206	000	257	000	PAYROLL CLEARING
206	000	390	000	Fund Balance
206	000	396	000	CHANGE IN FUND BALANCE
206	000	400	000	REVENUE CONTROL ACCOUNT
206	000	403	000	Current Property Taxes
206	000	407	000	Delinquent Property Taxes

UNPARALLELED FEATURES

○ Accounts Payable

- Validate budget balance at invoice entry
- One step processing of payments from multiple banks
- Need to void a check? You've got options!
 - Void and reissue check
 - Void check and reopen invoice voucher
 - Void check and invoice voucher
- Batch process checks or print on demand
- Customize your checks
 - Add your organizations' logo
 - Included electronic signature
- Choose Cash or Accrual accounting



888.742.2378
www.pontem.com

UNPARALLELED FEATURES

○ Payroll

- Comprehensive employee management and payroll setup
 - Scalable setup designed to handle simple to the most complex payroll setups
 - Automated direct deposit for deductions and net pay
- View employee check and ledger transactions from one screen
- Fully automated leave time accruals
- Image/Document Management add-on
 - Maintain electronic employee file
- Integrated Time Management add-on
 - Punch to paycheck automation
 - Extended employee benefit management
 - Employee self service

localhost: Demonstration - Pontem Payroll

File Edit Reports Help

Primary Tasks:
Overview (F4)
Manage Pay Vouchers (F6)
Process Checks (F7)
Manage Checks (F8)
Manage Employees (F9)
Manage W2s (F10)

View Tools Reports
Details
** Manage Employees
** Manage Checks

Quick Search
Status: All
Employee:
Check Date:

Search Advanced

Manage Pay Vouchers
New Voucher Edit Voucher Void Voucher

Detail View (Left-Click this header or press Alt-L to display the list)
Employee Number: 348 Name: OLMSTEAD, PAUL E
Department: 410 Pay Group:
Employee: Olmstead, Paul E
Check Date: 08/11/2009
Pay Period End Date: 08/09/2009
Transaction Date: 08/11/2009

Pay Type	Rate	Labor Category	Hours/Units	Amount	Date	Memo
Regular Pay	10.0500	410702	35.00	\$351.75		
Regular Pay	10.0500	569-261-704	12.00	\$120.60		
FICA Withd	0.0000		0.00	(\$29.29)		
Federal Withd	0.0000		0.00	(\$19.27)		
Medicare Withd	0.0000		0.00	(\$6.85)		
State Withd	0.0000		0.00	(\$20.55)		
Employer FICA	0.0000		0.00	(\$29.29)		
Employer Med	0.0000		0.00	(\$6.85)		

Gross: \$472.35 Taxes: (\$75.96) Deductions: \$0.00 Net: \$396.39

01/16/2010 8:24:50 AM PONTM © Copyright 2008, Resource Information Associates, Inc.



888.742.2378

www.pontem.com

© Copyright 2010 Resource Information Associates, Inc., makers of Pontem Software.

GOLD STANDARD FOR GREAT SUPPORT

- ◉ Friendly Staff that Actually Care
- ◉ Unlimited Remote Training and Support
- ◉ 24/7 Emergency Support
- ◉ Free Upgrades - including next generation product releases

With Pontem's support plan, you not only receive GREAT service, you can rest assured you'll never have to purchase a new release upgrade again!



888.742.2378

www.pontem.com

© Copyright 2010 Resource Information Associates, Inc., makers of Pontem Software.

NAVIGATING THE SOFTWARE

◉ Access all major functions from one screen

The main screen is divided into 3 areas.

Primary Tasks: Click to change what is shown in the main workspace. The workspace is where all your data will be displayed.

View, Tools, and Reports Tabs: Display relevant information for the primary task you've chosen.

Quick Search: Find stuff *fast!* Tailored to conduct common searches from the workspace view.

Main Workspace: Displays list views or detail views related to the chosen Primary Task

localhost:Payroll Demonstration - Pontem Accounts Payable

File Edit Reports Help

Primary Tasks:

- Overview (F4)
- Manage Vouchers (F5)
- Process Payments (F6)
- Manage Checks (F7)
- Manage Vendors (F8)

1

View Tools Reports

Review Open Vouchers

Review Paid Vouchers

Review All Vouchers

2

Quick Search

Voucher Status: all

Vendor Name: PONTEM SOFTW

Batch Date:

Search Advanced

3

Vouchers

New Copy Voucher Edit

Vouchers List (Double-Click the voucher you wish to view/edit)

Vendor Name	Address One	Vendor's Ref #	Batch Date	Balance Due
PONTEM SOFTWARE B...	215 DEXTER		07/20/2006	\$0.00
PONTEM SOFTWARE B...	215 DEXTER		09/21/2006	\$0.00
PONTEM SOFTWARE B...	215 DEXTER		10/20/2006	\$0.00
PONTEM SOFTWARE B...	215 DEXTER		10/20/2006	\$0.00
PONTEM SOFTWARE B...	215 DEXTER		12/21/2006	\$0.00
PONTEM SOFTWARE B...	215 DEXTER		05/16/2007	\$0.00
PONTEM SOFTWARE B...	215 DEXTER		10/19/2007	\$0.00
PONTEM SOFTWARE B...	215 DEXTER		12/13/2007	\$0.00
PONTEM SOFTWARE B...	215 DEXTER		05/22/2008	\$0.00
PONTEM SOFTWARE B...	215 DEXTER		10/21/2008	\$0.00
PONTEM SOFTWARE B...	215 DEXTER		12/04/2008	\$0.00
PONTEM SOFTWARE B...	215 DEXTER		05/21/2009	\$0.00
PONTEM SOFTWARE B...	215 DEXTER	87899	09/17/2009	\$0.00
PONTEM SOFTWARE B...	215 DEXTER	7899	10/08/2009	\$0.00
PONTEM SOFTWARE B...	215 DEXTER	809808	10/08/2009	\$0.00
PONTEM SOFTWARE B...	215 DEXTER	7789	10/29/2009	\$0.00
PONTEM SOFTWARE B...	215 DEXTER	8890	11/04/2009	\$0.00
PONTEM SOFTWARE B...	215 DEXTER	7899	12/15/2009	\$0.00
PONTEM SOFTWARE B...	215 DEXTER	9874	01/11/2010	\$868.00

Voucher Detail

Description: annual support for all programs Voucher ID: 3075

Voucher Date: 12/01/2008 Total: \$2,545.00 Payments: \$2,545.00

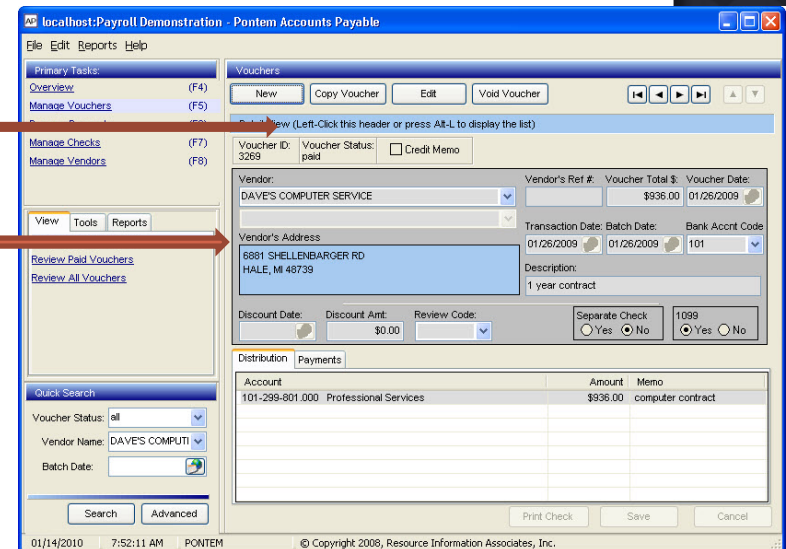
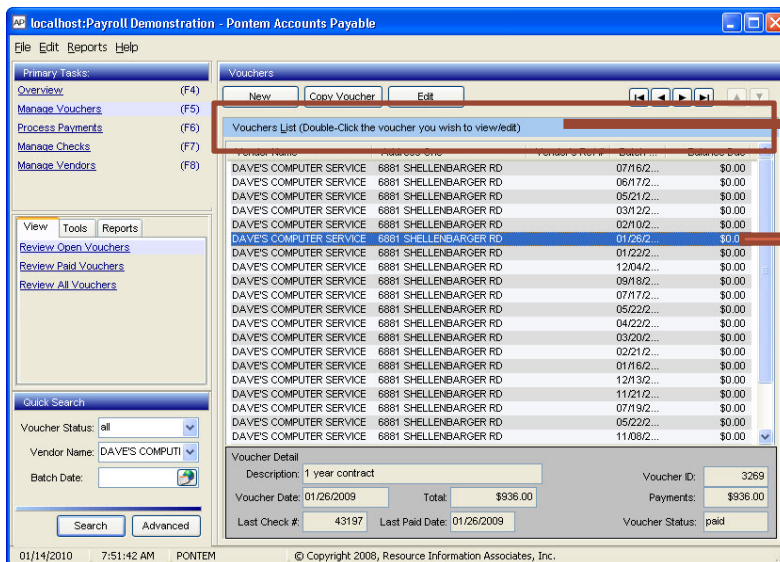
Last Check #: 43013 Last Paid Date: 12/04/2008 Voucher Status: paid

01/10/2010 1:26:30 PM PONTEM © Copyright 2008, Resource Information Associates, Inc.

NAVIGATING THE SOFTWARE

◉ Toggle between “List” and “Detail” views

Click a primary task to view a list of the records in your database. From here you can either click on the toggle bar to switch to the detail view OR narrow your list with ‘either a quick or advanced search’ to find the records you’re looking for. Click on a record from the list view to display its detail record.



NAVIGATING THE SOFTWARE

Tools and Reports Tabs

Dynamically changes with each primary task. Everything you need from *one simple screen*

Primary Tasks:	
Overview	(F4)
Manage Pay Vouchers	(F6)
Process Checks	(F7)
Manage Checks	(F8)
Manage Employees	(F9)
Manage W2s	(F10)

View	Tools	Reports
General		
Wages and Deductions		
Taxes and Pension		
Direct Deposit		
Notes		
Images/Documents		
** Manage Vouchers		

Tools Tab

Includes items such as customization of user defined tables, periodic processes (1099's and W2's) and data exports.

View	Tools	Reports
Labor Categories		
Total Names		
Pay Types		
Adjust Tax Priorities		
Recurring Codes		
Direct Deposit Banks		
Departments		

Reports Tab

No more searching for reports. Customize each primary task view with your favorite, frequently used reports.

View	Tools	Reports
Employee Address Report		
Employee Leave Time Summary Report		
Employee Pay Rate History Report		
Employee Mailing Labels		
Employee Pension Report		
Employee W4/Taxes Report		

MANAGING YOUR DATA

- ◎ Powerful Database
 - Open source
 - ODBC, SQL compliant
- ◎ Built in standardized chart of accounts
 - Local government (Michigan, Illinois)
 - Michigan schools
 - Or build your own

Note: If your State has a standardized chart not listed above, Pontem will build it for you!



888.742.2378

www.pontem.com

© Copyright 2010 Resource Information Associates, Inc., makers of Pontem Software.

MANAGING YOUR DATA

- Real-time integration between modules providing accurate up to the minute balances
- “Smart” data entry helps to avoid mistakes
 - Notification of insufficient budget for invoices
 - Warning of dates entered in prior fiscal year
 - Tests “in balance” condition of journal entries
- Maintains complete audit trail for changed transactions
- Ultimate flexibility with user defined tables and fields.



888.742.2378

www.pontem.com

© Copyright 2010 Resource Information Associates, Inc., makers of Pontem Software.

ROBUST SEARCHES AND REPORTING

- Quick access to your data is crucial
 - Retrieve information with easy to use searches
 - Quick Search - *find stuff fast!*

Tailored to conduct common searches. Each workspace view has its own customized "Quick Search".

Enter your criteria to quickly display a results list.

The screenshot displays the 'Pontem Accounts Payable' software interface. A 'Quick Search' dialog box is open, showing search criteria: 'Check Date Range' from 01/01/2009 to 09/30/2009, 'Vendor Name' as CONSUMERS ENERGY, and 'Check Status' as All. The 'Checks List' table below shows a list of checks with columns for Date, Check #, Payee, Amount, and Status. The status for all checks is 'Open'.

Date	Check #	Payee	Amount	Status
01/22/2009	4017	CONSUMERS ENERGY -	\$355.27	Open
01/22/2009	2243	CONSUMERS ENERGY -	\$217.95	Open
01/22/2009	2312	CONSUMERS ENERGY -	\$304.24	Open
02/19/2009	43252	CONSUMERS ENERGY -	\$1,347.48	Open
03/02/2009	4046	CONSUMERS ENERGY -	\$311.75	Open
03/02/2009	43272	CONSUMERS ENERGY -	\$1,081.38	Open
03/02/2009	2069	CONSUMERS ENERGY -	\$171.79	Open
03/02/2009	2321	CONSUMERS ENERGY -	\$314.16	Open
03/19/2009	43309	CONSUMERS ENERGY -	\$1,649.47	Open
03/19/2009	2323	CONSUMERS ENERGY -	\$260.23	Open
03/24/2009	2072	CONSUMERS ENERGY -	\$181.41	Open
04/01/2009	4069	CONSUMERS ENERGY -	\$267.40	Open
04/01/2009	43380	CONSUMERS ENERGY -	\$342.12	Open
04/23/2009	4075	CONSUMERS ENERGY -	\$278.76	Open
04/23/2009	43443	CONSUMERS ENERGY -	\$1,920.97	Open
04/23/2009	2075	CONSUMERS ENERGY -	\$210.30	Open
04/23/2009	2331	CONSUMERS ENERGY -	\$176.82	Open
05/21/2009	4093	CONSUMERS ENERGY -	\$248.61	Open
05/21/2009	43533	CONSUMERS ENERGY -	\$1,849.94	Open
05/21/2009	2334	CONSUMERS ENERGY -	\$123.73	Open
05/21/2009	2079	CONSUMERS ENERGY -	\$203.85	Open
06/18/2009	2081	CONSUMERS ENERGY -	\$201.08	Open
06/18/2009	5339	CONSUMERS ENERGY -	\$60.20	Open

ROBUST SEARCHES AND REPORTING

- Need to dig a little deeper with your search?
 - Advanced Search is just the ticket

Advanced Search Filters provide powerful, yet easy to use capability to build complex, compound queries.

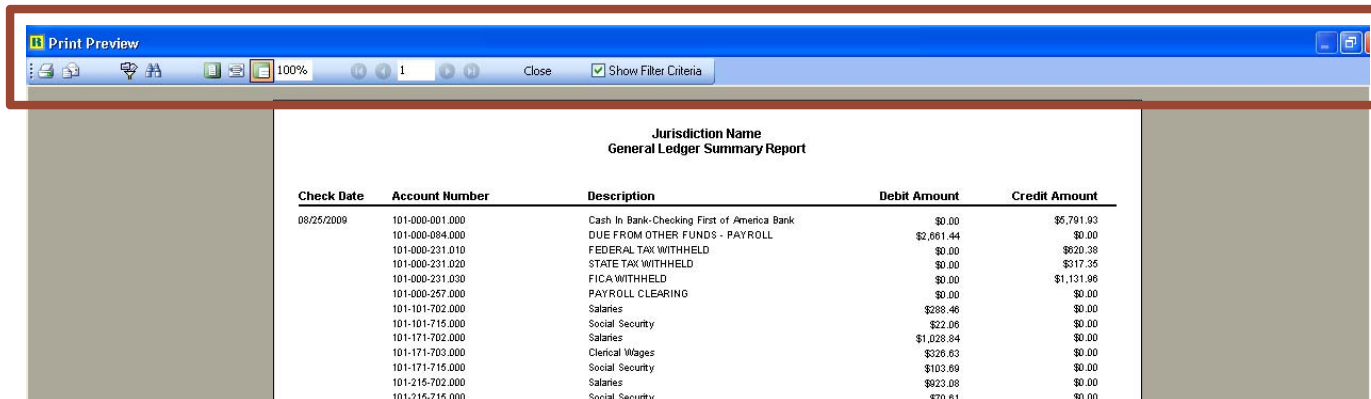
Display the results on a list view, then click on a record to display more detailed information.

Advanced Search filters are also used for defining information you want to print on a report.

You can even name and save filters for frequently used searches!

ROBUST SEARCHES AND REPORTING

- Dynamic reporting tools
 - Print Preview tool bar
 - Print (including print to file in various formats)
 - Automatically create PDF and email
 - Re-filter with new criteria
 - Find text or phrases within report



Check Date	Account Number	Description	Debit Amount	Credit Amount
08/25/2009	101-000-001.000	Cash In Bank-Checking First of America Bank	\$0.00	\$5,791.93
	101-000-084.000	DUE FROM OTHER FUNDS - PAYROLL	\$2,661.44	\$0.00
	101-000-231.010	FEDERAL TAX WITHHELD	\$0.00	\$920.39
	101-000-231.020	STATE TAX WITHHELD	\$0.00	\$217.35
	101-000-231.030	FICA WITHHELD	\$0.00	\$1,131.96
	101-000-257.000	PAYROLL CLEARING	\$0.00	\$0.00
	101-101-702.000	Salaries	\$288.46	\$0.00
	101-101-715.000	Social Security	\$22.06	\$0.00
	101-171-702.000	Salaries	\$1,028.84	\$0.00
	101-171-703.000	Clerical Wages	\$326.63	\$0.00
	101-171-715.000	Social Security	\$103.69	\$0.00
	101-215-702.000	Salaries	\$923.08	\$0.00
	101-215-715.000	Social Security	\$70.61	\$0.00



888.742.2378

www.pontem.com

© Copyright 2010 Resource Information Associates, Inc., makers of Pontem Software.

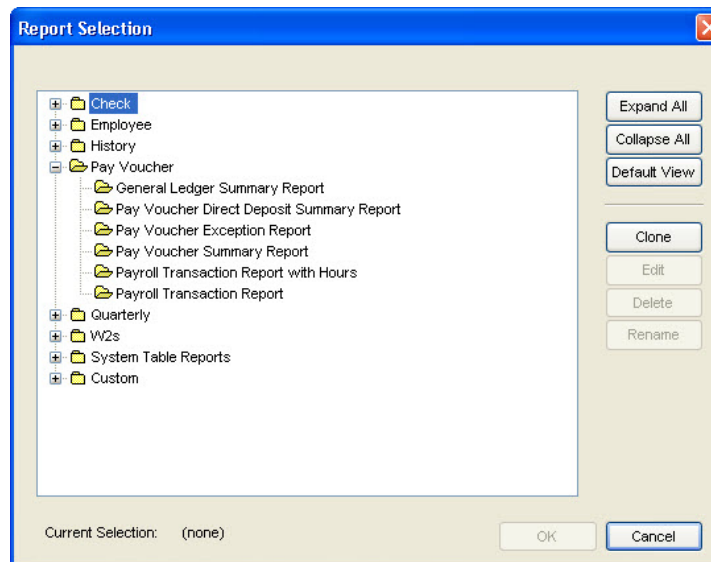
ROBUST SEARCHES AND REPORTING

Dynamic reporting tools

- Report Selection with organized, expanding views
- Built in report writer for customizing your forms

Open one folder of reports or expand them all to view your report selections.

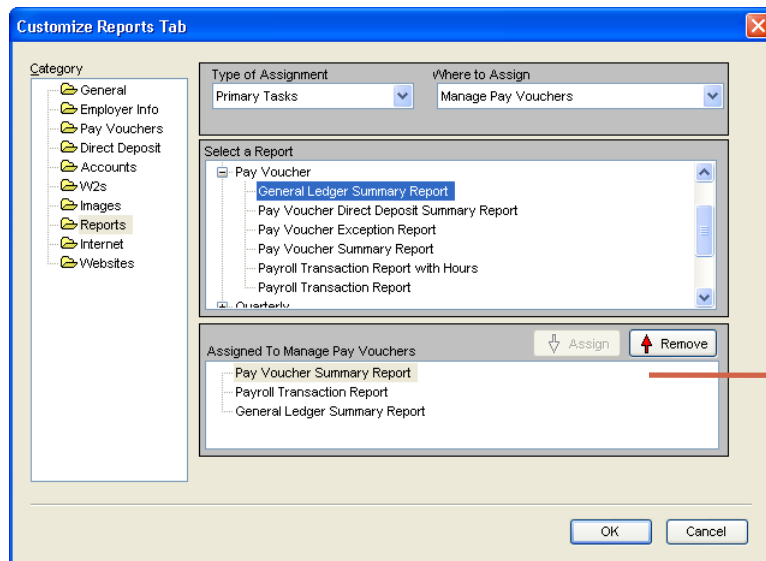
Customize reports and forms with your organization's logo for a truly professional look



ROBUST SEARCHES AND REPORTING

Dynamic reporting tools

- Customize Reports Tab on each workspace with your frequently used reports



THANK YOU FOR YOUR INTEREST

The Pontem Fund Accounting suite of software is scalable, affordable and easy to use. Pontem product specialist are ready to help you tailor the software for your organization. To learn more:

- Call Pontem at 888.742.2378
- Submit a request for information at Pontem.com
- Email sales@pontem.com

We're looking forward to hearing from you



888.742.2378

www.pontem.com

© Copyright 2010 Resource Information Associates, Inc., makers of Pontem Software.